

Installation Instructions

Part Numbers:

50083

CUSTOM QUICK INSTALL

MOUNTING KIT

Dodge Ram 1500

(Does not fit 5-1/2' beds)

Equipment Required:

Fastener Kit: 50083F

Wrenches: 3/4", 7/8", 15/16"

Drill Bits: 1/8", 9/16", 5/8"

1-1/8" HOLE SAW

Other Tools: Center Punch, Measuring Tape

WARNING: Under no circumstances do we recommend exceeding the towing vehicle manufacturers recommended vehicle towing capacity.

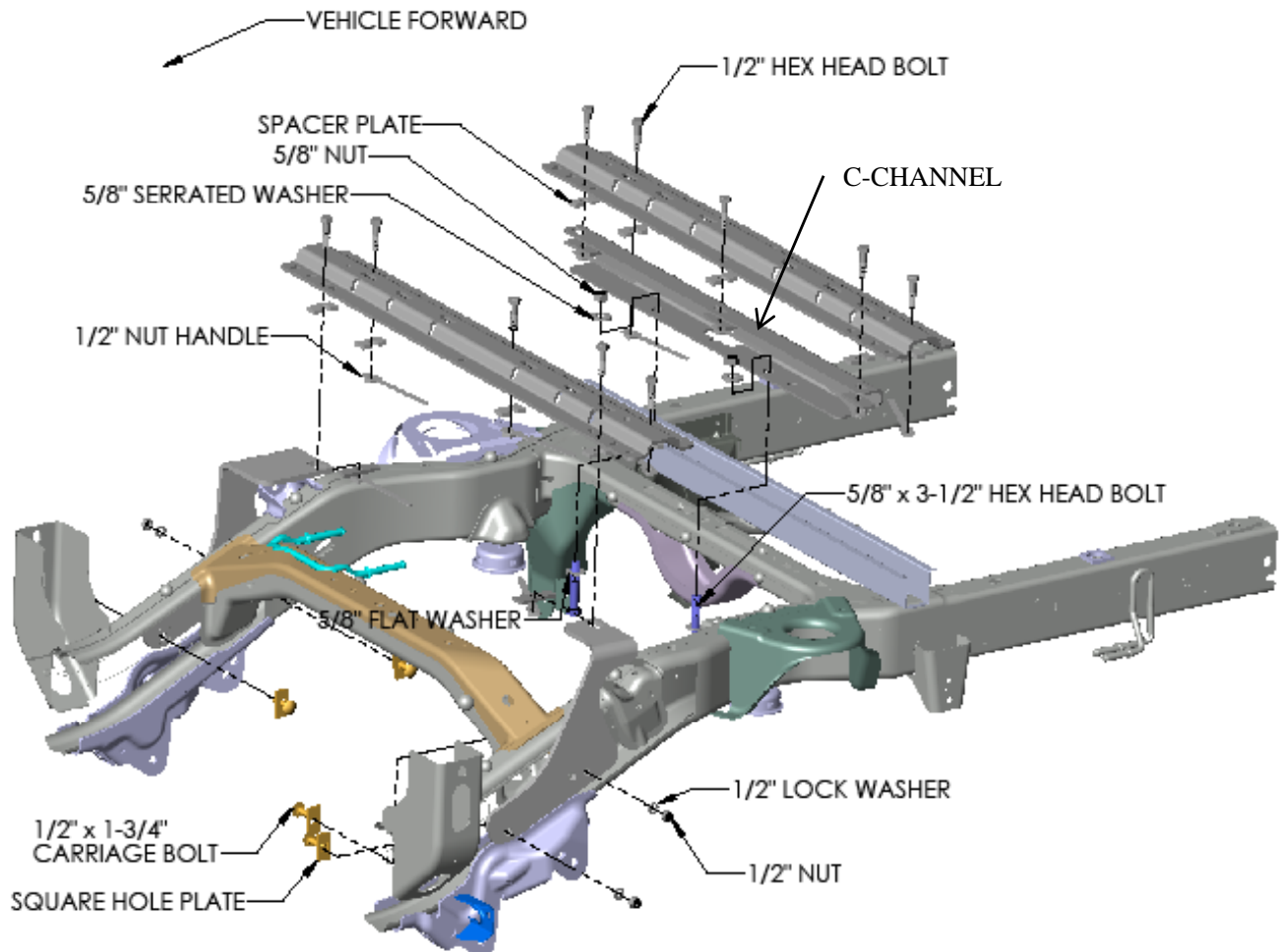


FIG. 1

INSTALLATION SHOWN FOR THE 58058 OR 30035 RAILS

**FOR
INSTALLATION
OF 58058 OR 30035
RAIL KITS**

**Installation Instructions
CUSTOM QUICK INSTALL
MOUNTING KIT
Dodge Ram 1500**

Part Numbers:
50083

(Does not fit 5-1/2' beds)

1. Do not install mounting rails over plastic bed liners. Plastic bed liners must be cut out of the way to provide metal to metal contact. Mounting rails may be installed on spray in liners.
2. Use only bolts, nuts, and washers supplied to install this kit. All bolts are grade 5 and nuts are grade 5 unless otherwise specified.
3. **DO NOT INSTALL THIS PRODUCT ON OR ATTEMPT TO TOW WITH A TRUCK WITH A BED THAT IS LESS THAN 6' LONG.**
4. These instructions are guidelines only, actual installation is the responsibility of the installer and the owner. Always measure truck and trailer before installing hitch to be sure that there is clearance at the cab and at the bumper to allow for turns.
5. On the driver's side frame rail, temporarily remove the forward hex nuts and ground wires attached to the vehicle frame.
6. Remove the spare tire if this helps to give more room to install the product.
7. Remove the plastic fender wells.
8. Place the rearward mounting rail in the bed of the vehicle. Center the rail from left to right on the floor of the truck bed and use your tape measure to locate the proper distance from the rear of the rail to the to the rear edge of the truck box as illustrated on page 3.
9. Use a center punch to mark the holes in the rail per the illustration. Move the rail out of the way and drill each position through the bed with a 1/8" drill bit. **Note: On the driver's side of the vehicle the gas tank is located below the bed of the vehicle. When drilling holes through the bed be sure not to damage the fuel tank.**
10. To place the c-channel above the cross member as shown on page 1, temporarily remove the plastic clips that hold the wiring harness to the top of the cross member. Also remove the rear differential breather tube from the cross member. Place it approximately centered from left to right. Check that the 1/8" drilled holes align with the slots in the c-channel.
11. Enlarge the 1/8" drilled holes to 9/16" with a drill.
12. Fasten the c-channel to the vehicle frame as shown in Figure 1 using 5/8" hardware. Bolt up through the trucks cross member.
13. Reposition the mounting rail over the holes in the bed and fasten the mounting rail to the c-channel using the supplied 1/2" hex bolts. Use the supplied U-shaped blocks between the c-channel or mounting rails and the truck bed to ensure metal to metal contact.
14. Place the unassembled 5th wheel support arches/slider/goose into the already installed mounting rail. Position the forward mounting rail with the support arches/slider/goose by inserting the tabs into the mounting rail and pushing the mounting rail tight towards the other mounting rail. Ensure that the mounting rail is centered on the bed of the vehicle. This will position the rail in the correct location and ensure that the 5th wheel will have a snug fit to the truck. **Note: If more than one hitch product will be used with the mounting rails then both types should be used at the same time to align the rearward mounting rail. This will ensure that one product does not compromise the fit of the other.**
15. Use a center punch to mark the holes in the forward rail per the illustration. Move the rail out of the way and drill each position with a 1/8" drill bit. Enlarge the 1/8" drilled holes to 9/16". Reposition the mounting rails over the holes drilled in the bed.
16. Install the front frame rail brackets as shown on page 1. The brackets install ahead of the hat section that supports the bed. Use the 1/2" pull wire to pull the carriage bolts and square hole plates into the frame.
17. Starting with the hex bolts that fasten the rails to the frame brackets, torque all the nuts. Torque the hex bolts positioned in the center of the rails. Torque the fasteners that attach the frame brackets to the vehicle frame.
18. Re-install the ground wire remove in installation step 5. Re-install spare tire. Re-attach the wiring harness and the differential breather tube that were removed in step 10. Torque the 1/2" fasteners to 75 (ft-lb.) 102 (N*M) Torque the 5/8" fasteners to 150 (ft-lb.) 204 (N*M).

Installation Instructions

Part Numbers:

CUSTOM QUICK INSTALL

50083

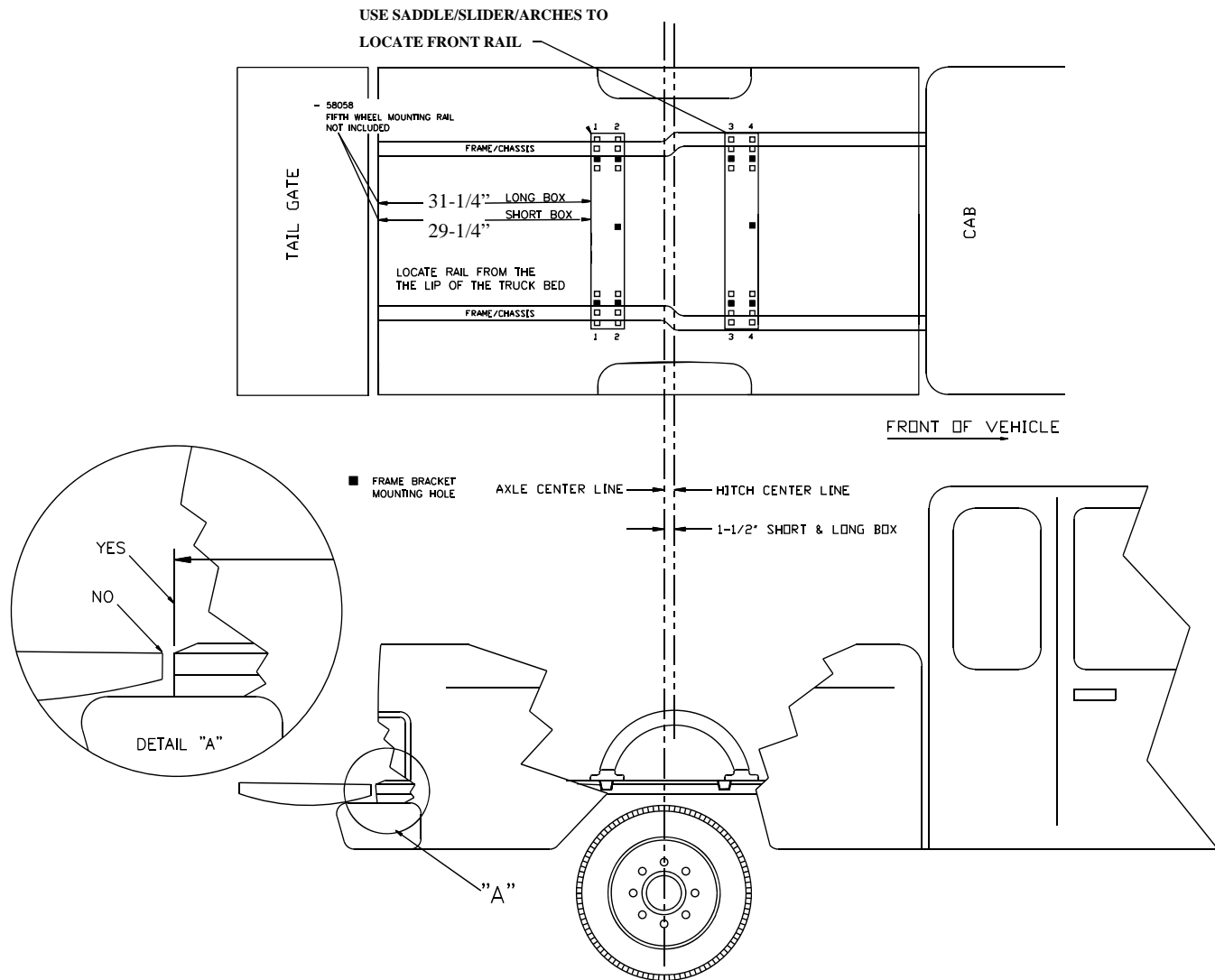
MOUNTING KIT

Dodge Ram 1500

(Does not fit 5-1/2' beds)

Position the Rail

RAILS 58058 OR 30035 ONLY



FOR RAILS 58058 OR 30035 ONLY

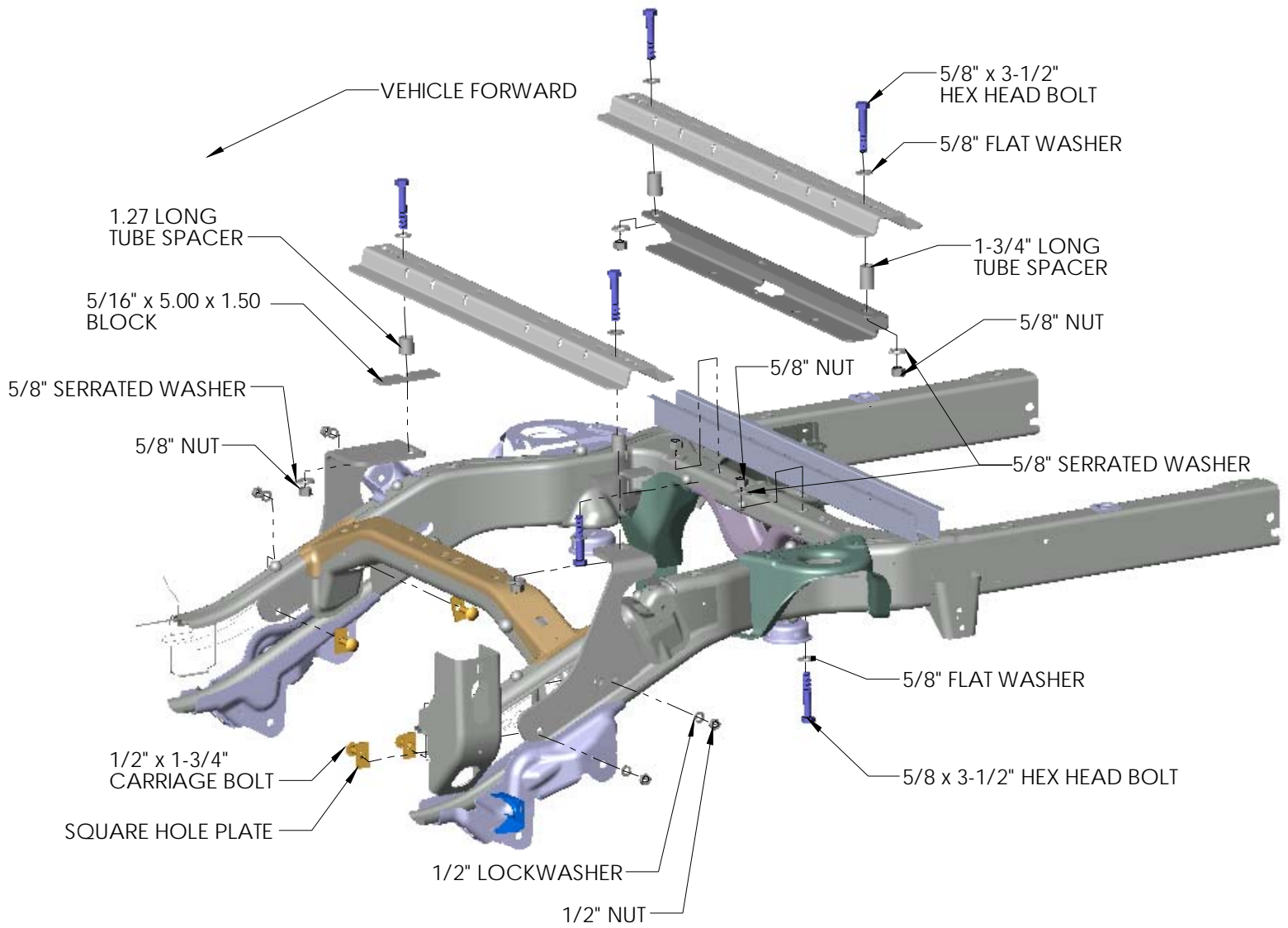


FIG. 2

INSTALLATION SHOWN FOR THE 30124 OR 30095 RAILS

**FOR
INSTALLATION OF
30124 OR 30095
RAIL KITS**

**Installation Instructions
CUSTOM QUICK INSTALL
MOUNTING KIT
Dodge Ram 1500**

Part Numbers:
50083

(Does not fit 5-1/2' beds)

1. Do not install mounting rails over plastic bed liners. Plastic bed liners must be cut out of the way to provide metal to metal contact. Mounting rails may be installed on spray in liners.
2. Use only bolts, nuts, and washers supplied to install this kit. All bolts are grade 5 and nuts are grade 5 unless otherwise specified.
3. **DO NOT INSTALL THIS PRODUCT ON OR ATTEMPT TO TOW WITH A TRUCK WITH A BED THAT IS LESS THAN 6' LONG.**
4. These instructions are guidelines only, actual installation is the responsibility of the installer and the owner. Always measure truck and trailer before installing hitch to be sure that there is clearance at the cab and at the bumper to allow for turns.
5. On the driver's side frame rail, temporarily remove the forward hex nuts and ground wires attached to the vehicle frame.
6. Remove the spare tire if this helps to give more room to install the product.
7. Remove the plastic fender wells.
8. Place the rearward mounting rail in the bed of the vehicle. Center the rail from left to right on the floor of the truck bed and use your tape measure to locate the proper distance from the rear of the rail to the to the rear edge of the truck box as illustrated on page 6.
9. Use a center punch to mark the holes in the rail as shown in illustration on page 6 and fig. 2. Move the rail out of the way and drill each position through the bed with a 1/8" drill bit. **Note: On the driver's side of the vehicle the gas tank is located below the bed of the vehicle. When drilling holes through the bed be sure not to damage the fuel tank.**
10. To place the c-channel above the cross member as shown on page 4. Temporarily remove the plastic clips that hold the wiring harness to the top of the cross member. Also remove the rear differential breather tube from the cross member. Place it approximately centered from left to right. Check that the 1/8" drilled holes align with the slots in the c-channel.
11. Enlarge the 1/8" drilled holes to 1-1/8" with a hole saw.
12. Fasten the c-channel to the vehicle frame as shown in Figure 1 using 5/8" hardware. Bolt up through the trucks cross member. Install the 1-3/4" long tube spacers above the channel.
13. Reposition the mounting rail over the holes in the bed and fasten the mounting rail to the c-channel using the supplied 5/8" hex bolts. Use the supplied 1-3/4" long tube spacers between the c-channel or mounting rails to ensure metal to metal contact.
14. Place the unassembled 5th wheel support arches/slider/goose into the already installed mounting rail. Position the forward mounting rail with the support arches/slider/goose by inserting the tabs into the mounting rail and pushing the mounting rail tight towards the other mounting rail. Ensure that the mounting rail is centered on the bed of the vehicle. This will position the rail in the correct location and ensure that the 5th wheel will have a snug fit to the truck. **Note: If more than one hitch product will be used with the mounting rails then both types should be used at the same time to align the rearward mounting rail. This will ensure that one product does not compromise the fit of the other.**
15. Use a center punch to mark the holes in the forward rail per the illustration. Move the rail out of the way and drill each position with a 1/8" drill bit.
16. Install the front frame rail brackets as shown on page 1. Use the 1/2" pull wire to pull the carriage bolts and square hole plates into the frame. Enlarge the 1/8" drilled holes to 1-1/8" with a hole saw. Reposition the mounting rails over the holes drilled in the bed. Place the 2" long tube spacers through the 1-1/8" holes. Fasten the front rail to the frame brackets as shown in figure 2 using the 5/8" bolt and flat washer down through the rail. Fasten with 5/8" serrated washer and nut.
17. Starting with the hex bolts that fasten the rails to the frame brackets, torque all the nuts. Torque the fasteners that attach the frame brackets to the vehicle frame. Torque the 5/8" fasteners to 150 (ft-lb.) 204 (N*M) Torque the 1/2" fasteners to 75 (ft-lb.) 102 (N*M)
18. Re-install the ground wires remove in installation step 5. Re-install spare tire. Re-install spare tire. Re-attach the wiring harness and the differential breather tube that were removed in step 10.

Installation Instructions

Part Numbers:

CUSTOM QUICK INSTALL

50083

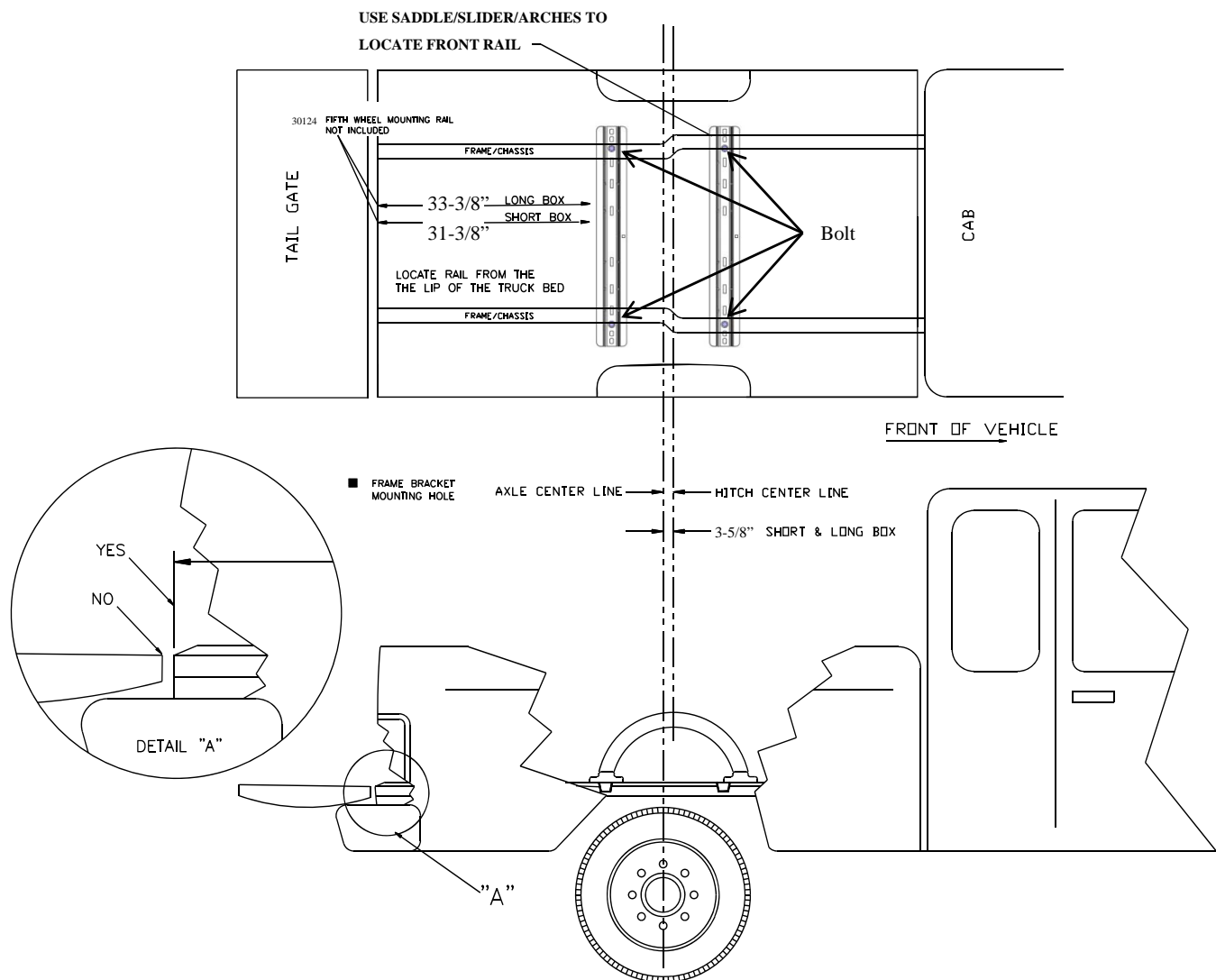
MOUNTING KIT

Dodge Ram 1500

(Does not fit 5-1/2' beds)

Position the Rail

RAILS 30095 OR 30124 ONLY



FOR RAILS 30124 OR 30095 ONLY